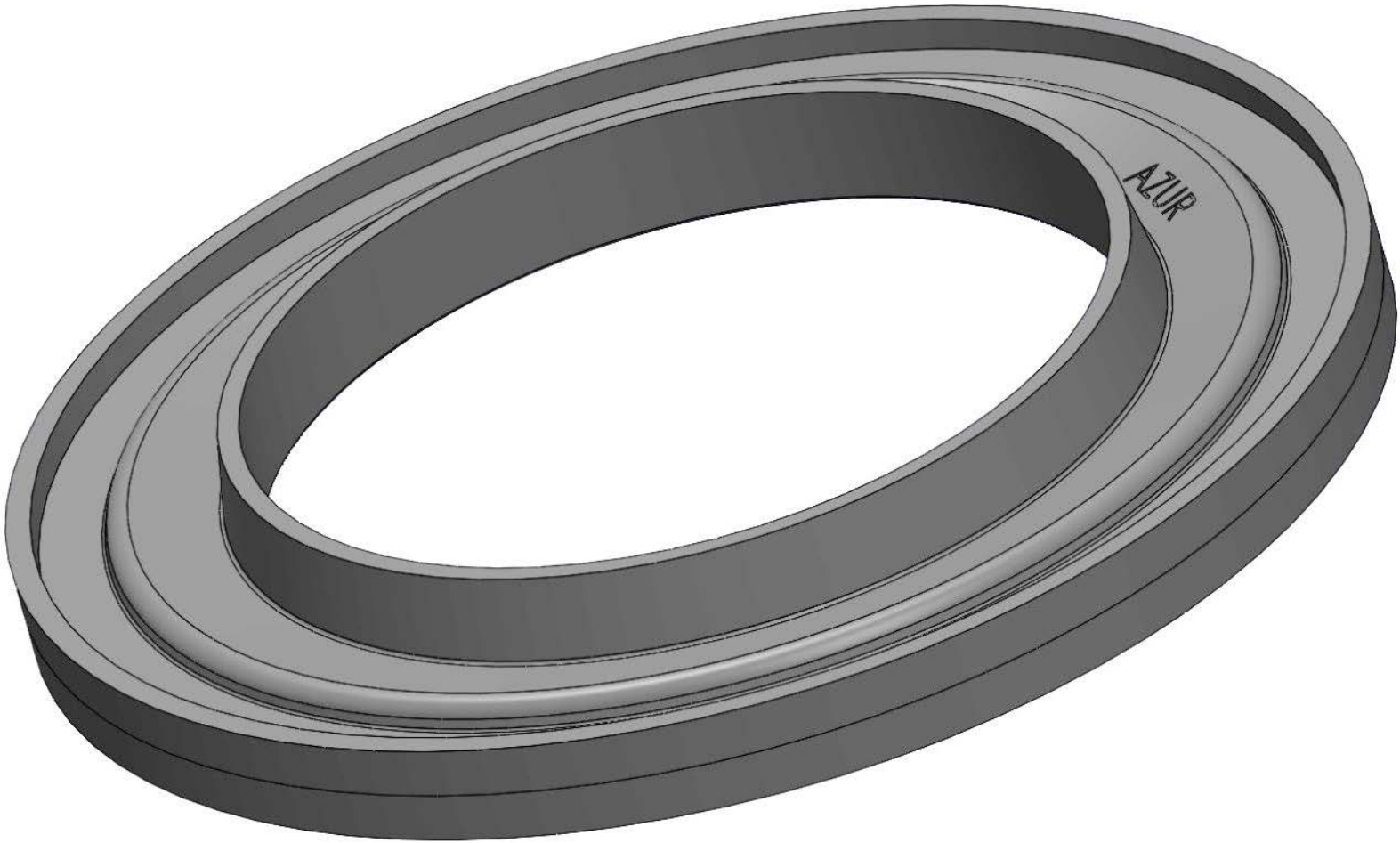




11000 Rue Sherbrooke-Est, Local C-09
Montréal, Qc (Can)
H1B 5W1

AZUR CAST-IN SANITARY SEALS



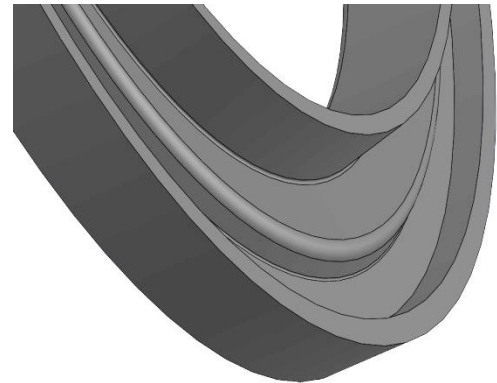
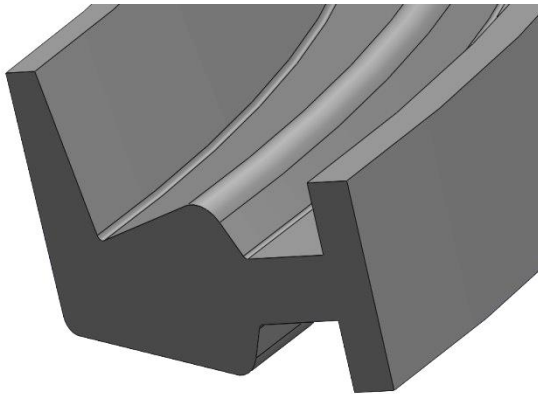
2017

AZUR CAOUTCHOUC CANADA INC.
TEL. 514-321-9692 OU 800-567-7142 / FAX. 514-321-1353
COURRIEL AZUR@AZURCAOUTCHOUC.COM

PERFORMING.



SPLIT VIEW – CAST-IN SANITARY SEAL



- Available for concrete, PVC and casting pipes
- High precision measures; the seal connect easily to your installations
- Respect the strictest standards of the industry
- Also available in nitrile if necessary



11000 Rue Sherbrooke-Est, Local C-09
Montréal, Qc (Can)
H1B 5W1

AZUR CAST-IN SANITARY SEALS **PVC**

PIECE NO.	INT. DIMENSION OF PIPE	QTY / BOX*
JIP050-AZ	50mm (2in)	90
JIP075-AZ	75mm (3in)	40
JIP100-AZ	100mm (4in)	80
JIP125-AZ	125mm (5in)	70
JIP150-AZ	150mm (6in)	50
JIP200-AZ	200mm (8in)	45
JIP250-AZ	250mm (10in)	30
JIP300-AZ	300mm (12in)	25
JIP375-AZ	375mm (15in)	20
JIP450-AZ	450mm (18in)	20
JIP525-AZ	525mm (21in)	10
JIP600-AZ	600mm (24in)	15
JIP750-AZ	750mm (30in)	5
JIP900-AZ	900mm (36in)	5

NITRILE AND OTHER CUSTOM SIZES AVAILABLE ON DEMAND. CONTACT US!

*MINIMUM QTY OF ONE BOX PER ORDER

www.azurcaoutchouc.com

AZUR CAOUTCHOUC CANADA INC.

TEL. 514-321-9692 OU 800-567-7142 / FAX. 514-321-1353

COURRIEL AZUR@AZURCAOUTCHOUC.COM



11000 Rue Sherbrooke-Est, Local C-09
Montréal, Qc (Can)
H1B 5W1

AZUR CAST-IN SANITARY SEALS **CONCRETE**

PIECE NO.	INT. DIMENSION OF PIPE	WALL THICKNESS OF PIPE (IN)	QTY / BOX*
JIB250-AZ	250mm (10in)	2.5	20
JIC250-AZ	250MM (10in)	2.75	20
JIB300-AZ	300mm (12in)	2.5	20
JIC300-AZ	300mm (12in)	2.75	20
JIB375-AZ	375mm (15in)	2.25	10
JIC375-AZ	375mm (15in)	2.75-3	10
JIB450-AZ	450mm (18in)	2.5	15
JIC450-AZ	450mm (18in)	3.25	10
JIB525-AZ	525mm (21in)	2.75	15
JIC525-AZ	525mm (21in)	3.5	15
JIB600-AZ	600mm (24in)	3	10
JIC600-AZ	600mm (24in)	3.75	10
JIB750-AZ	750mm (30in) - (D70-72)	3.5	5
JIB751-AZ	750mm (30in) - (D84-96) <u>(square manhole)</u>	3.5	5
JIB752-AZ	750mm (30in) - (D48)	3.5	5

AZUR CAOUTCHOUC CANADA INC.
TEL. 514-321-9692 OU 800-567-7142 / FAX. 514-321-1353
COURRIEL AZUR@AZURCAOUTCHOUC.COM



11000 Rue Sherbrooke-Est, Local C-09
Montréal, Qc (Can)
H1B 5W1

JIC750-AZ	750mm (30in)	4.25	5
JIC751-AZ	750mm (30in) (<u>square manhole</u>)	4.25	5
JIB900-AZ	900mm (36in)	4	5
JIC900-AZ	900mm (36in) (D60-72)	4.75	5
JIB901-AZ	900mm (36in) (<u>square manhole</u>)	4	5
JIC901-AZ	900mm (36in) (<u>square manhole</u>)	4.75	5
JIB1050-AZ	1050mm (42in)	4.5	5
JIC1050-AZ	1050mm (42in)	5.25	5
JIC1051-AZ	1050mm (42in) (<u>square manhole</u>)	5.25	5
JIC1200-AZ	1200mm (48in)	5.75	5
JIC1201-AZ	1200mm (48in) (<u>square manhole</u>)	5.75	5
JIC1351-AZ	1350mm (54in) (<u>square manhole</u>)	6.25	5
JIC1501-AZ	1500mm (60in) (<u>square manhole</u>)	6.75	5

NITRILE AND OTHER CUSTOM SIZES AVAILABLE ON DEMAND. CONTACT US!

*MINIMUM QTY OF ONE BOX PER ORDER

www.azurcaoutchouc.com

AZUR CAOUTCHOUC CANADA INC.
TEL. 514-321-9692 OU 800-567-7142 / FAX. 514-321-1353
COURRIEL AZUR@AZURCAOUTCHOUC.COM



11000 Rue Sherbrooke-Est, Local C-09
Montréal, Qc (Can)
H1B 5W1

AZUR CAST-IN SANITARY SEALS CASTING (CL100)

PIECE NO.	INT. DIMENSION OF PIPE	QTY / BOX*
JIF100-AZ	100mm (4in)	80
JIF150-AZ	150mm (6in)	35
JIF200-AZ	200mm (8in)	35
JIF250-AZ	250mm (10in)	25
JIF300-AZ	300mm (12in)	20
JIF351-AZ	350mm (14in)	20
JIF401-AZ	400mm (16in)	20
JIF451-AZ	450mm (18in)	10
JIF501-AZ	500mm (20in)	10
JIF601-AZ	600mm (24in)	15

NITRILE AND OTHER CUSTOM SIZES AVAILABLE ON DEMAND. CONTACT US!

*MINIMUM QTY OF ONE BOX PER ORDER

www.azurcaoutchouc.com

AZUR CAOUTCHOUC CANADA INC.
TEL. 514-321-9692 OU 800-567-7142 / FAX. 514-321-1353
COURRIEL AZUR@AZURCAOUTCHOUC.COM

PHYSICAL CHARACTERISTICS
OF AZUR RUBBER SANITARY SEALS

BNQ NQ2622-420/2009 B ANNEX

PHYSICAL TEST	ASTM TEST #	REQUIRED RESULTS :	
		ASTM C923M BNQ 2622-420	GIVEN RESULTS
HARDNESS SHORE TYPE A	D-2240	45 ±5 DURO	46 DURO
TENSILE STRENGTH	D-412	MIN 8.5 MPa	31.4 MPa
ELONGATION AT BREAK	D-412	MIN 350%	591%
HEAT AGING (70H @ 70°C)	D-573		
- TENSILE STRENGTH CHANGE - ELONGATION CHANGE		MAX -15% MAX -20%	-3.42% -9.68%
COMPRESSION SET (22H @ 70°C)	D-395 B METHOD	MAX 25%	15.18%
WATER ABSORPTION (48H @ 70°C)	D-471	MAX 10%	0.32%
OZONE RESITANCE TO 25 PPHM (48H @ 40°C) WITH 20% STRAIN	D-1149 A METHOD	CLASSE 0	NO RIPPING
LOW TEMPERATURE BRITTLENESS (-40°C)	D-746 B METHOD	NO RIPPING	NO RIPPING
TEARING RESISTANCE	D-624 DIE C	MIN 34 KN/m	80.5 KN/m
RESISTANCE TO 1N CHLORIDRIC ACID (48H @ 22°C)	D-543	NO WEIGHT LOSS	NO WEIGHT LOSS
RESISTANCE TO 1N SULFURIC ACID (48H @ 22°C)	D-543	NO WEIGHT LOSS	NO WEIGHT LOSS

www.azurcaoutchouc.com