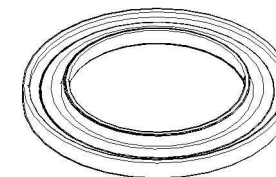
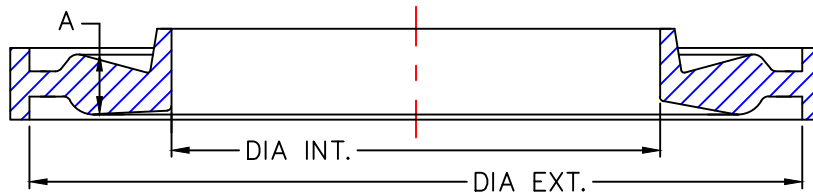


AZUR CONCRETE CAST-IN SEAL DIMENSIONS

CODE	WALL/PIPE TYPE	DESCRIPTION	A	DIA INT.	DIA EXT.
JIB250-AZ	B	Jl 10" CONCRETE 2.5	24	343	470
JIC250-AZ	C	Jl 10" CONCRETE 2.75	24	343	470
JIB300-AZ	B	Jl 12" CONCRETE 2.5	24	381	508
JIC300-AZ	C	Jl 12" CONCRETE 2.75	24	394	521
JIB375-AZ	B	Jl 15" CONCRETE 2.25	24	438	565
JIC375-AZ	C	Jl 15" CONCRETE 2.75-3	24	476	603
JIB450-AZ	B	Jl 18" CONCRETE 2.5	24	546	673
JIC450-AZ	C	Jl 18" CONCRETE 3.25	24	559	686
JIB525-AZ	B	Jl 21" CONCRETE 2.75	24	635	762
JIC525-AZ	C	Jl 21" CONCRETE 3.5	24	673	800
JIB600-AZ	B	Jl 24" CONCRETE 3	24	708	835
JIC600-AZ	C	Jl 24" CONCRETE 3.75	24	740	867
JIC675-AZ	C	Jl 27" CONCRETE 4	25	832	959
JIB750-AZ	B	Jl 30" CONCRETE 3.5	25	889	1016
JIC750-AZ	C	Jl 30" CONCRETE 4.25	25	933	1060
JIC751-AZ	C	Jl 30" CONCRETE 4.25 "RECTANGULAR MANHOLE"	25	845	972
JIB900-AZ	B	Jl 36" CONCRETE 4	25	1080	1207
JIB901-AZ	B	Jl 36" CONCRETE 4 "RECTANGULAR MANHOLE"	25	1016	1143
JIC900-AZ	C	Jl 36" CONCRETE 4.75 (D60-72)	25	1143	1270
JIC901-AZ	C	Jl 36" CONCRETE 4.75 "RECTANGULAR MANHOLE"	25	1095	1222
JIB1050-AZ	B	Jl 42" CONCRETE 4.5	25	1280	1407
JIB1051-AZ	B	Jl 42" CONCRETE 4.5 "RECTANGULAR MANHOLE"	25	1245	1372
JIC1050-AZ	C	Jl 42" CONCRETE 5.25	25	1321	1448
JIC1051-AZ	C	Jl 42" CONCRETE 5.25 "RECTANGULAR MANHOLE"	25	1283	1410
JIB1200-AZ	B	Jl 48" CONCRETE 5	25	1461	1588
JIC1200-AZ	C	Jl 48" CONCRETE 5.75	25	1518	1645
JIC1201-AZ	C	Jl 48" CONCRETE 5.75 "RECTANGULAR MANHOLE"	25	1454	1581
JIC1351-AZ	C	Jl 54" CONCRETE 6.25 "RECTANGULAR MANHOLE"	25	1638	1765
JIC1501-AZ	C	Jl 60" CONCRETE 6.75 "RECTANGULAR MANHOLE"	25	1803	1930

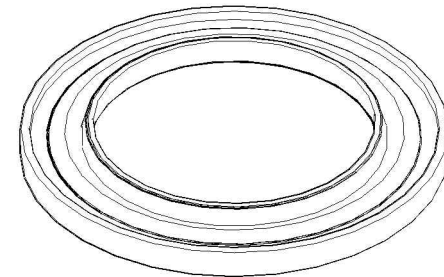
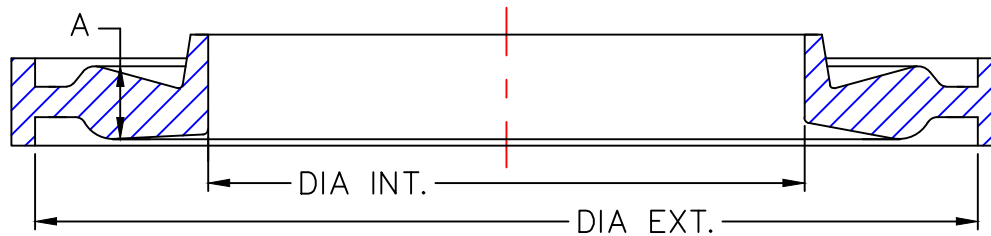


DRAWN BY:	A.B.	23/03/2017	PROJECT:
VERIFIED BY:			DESCRIPTION : AZUR CONCRETE CAST-IN SEAL
PROPERTY & CONFIDENTIALITY THE INFORMATIONS PRESENT ON THIS DRAWING ARE THE SOLE PROPERTY OF AZUR RUBBER. ANY REPRODUCTION, COMPLETE OR PARTIAL OF THIS DRAWING WITHOUT THE WRITTEN APPROVAL OF AZUR RUBBER IS STRICTLY PROHIBITED.	UNSPECIFIED TOLERANCES METRIC DIMENSIONS ANGLES : ± f 0 : ± 1.00mm 0.0 : ± 0.50mm 0.00 : ± 0.250mm 0.000 : ± 0.125mm U.S.A. TYPE PROJECTIONS DO NOT MEASURE THE DRAWING	MATERIAL :	RUBBER CONFORM TO BNQ SPECIFICATIONS
		PART NUMBER :	



AZUR PVC CAST-IN SEAL DIMENSIONS

DESCRIPTION		A	DIA INT.	DIA EXT.
JIP050-AZ	Jl 2" PVC	24	41	168
JIP075-AZ	Jl 3" PVC	24	67	194
JIP100-AZ	Jl 4" PVC	24	83	210
JIP135-AZ	Jl 5" PVC	24	114	241
JIP150-AZ	Jl 6" PVC	24	124	251
JIP200-AZ	Jl 8" PVC	24	175	302
JIP250-AZ	Jl 10" PVC	24	222	349
JIP300-AZ	Jl 12" PVC	24	273	400
JIP375-AZ	Jl 15" PVC	24	343	470
JIP450-AZ	Jl 18" PVC	24	432	559
JIP525-AZ	Jl 21" PVC	24	495	622
JIP600-AZ	Jl 24" PVC	24	584	711
JIP750-AZ	Jl 30" PVC	24	740	867
JIP900-AZ	Jl 36" PVC	24	914	1041

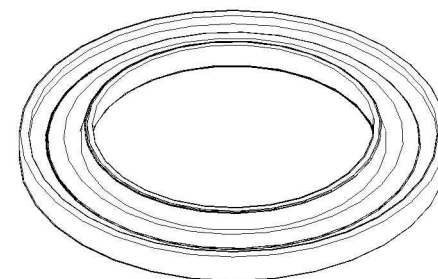
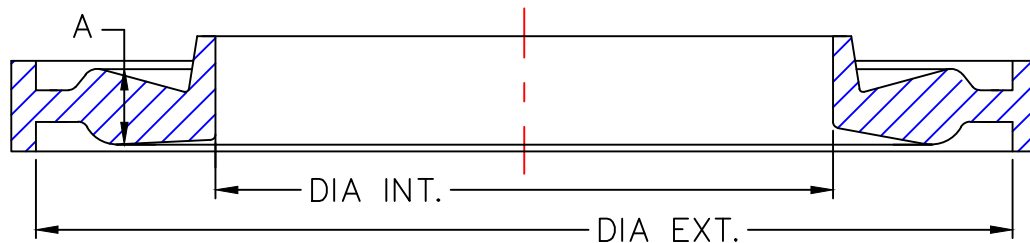


DRAWN BY: A.B.	23/03/2017	PROJECT:
VERIFIED BY:		DESCRIPTION : AZUR PVC CAST-IN SEAL
<small>PROPERTY & CONFIDENTIALITY</small> <small>THE INFORMATIONS PRESENT ON THIS DRAWING ARE THE SOLE PROPERTY OF AZUR RUBBER. ANY REPRODUCTION, COMPLETE OR PARTIAL OF THIS DRAWING WITHOUT THE WRITTEN APPROVAL OF AZUR RUBBER IS STRICTLY PROHIBITED.</small>	<small>UNSPECIFIED TOLERANCES</small> <small>METRIC DIMENSIONS</small> <small>ANGLES : ± f</small> <small>0 : ± 1.00mm</small> <small>0.0 : ± 0.50mm</small> <small>0.00 : ± 0.250mm</small> <small>0.000 : ± 0.125mm</small> <small>U.S.A. TYPE PROJECTIONS DO NOT MEASURE THE DRAWING</small>	MATERIAL : RUBBER CONFORM TO BNQ SPECIFICATIONS
		PART NUMBER :



AZUR CLASS 100 CAST-IN SEAL DIMENSIONS

DESCRIPTION		A	DIA INT.	DIA EXT.
JIF150-AZ	Ji 6" CL100	24	140	267
JIF200-AZ	Ji 8" CL100	24	197	324
JIF250-AZ	Ji 10" CL100	24	248	375
JIF300-AZ	Ji 12" CL100	24	298	425
JIF350-AZ	Ji 14" CL100	24	343	470
JIF401-AZ	Ji 16" CL100	24	400	527
JIF451-AZ	Ji 18" CL100	24	451	578
JIF501-AZ	Ji 20" CL100	24	502	629
JIF601-AZ	Ji 24" CL100	24	584	711

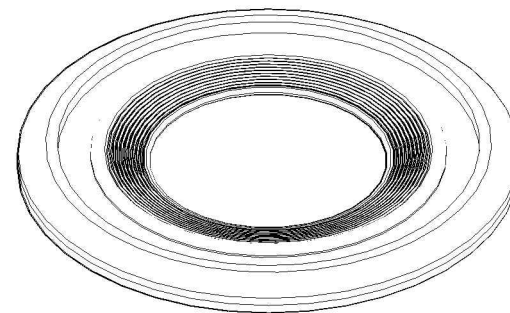
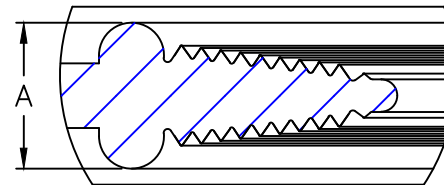
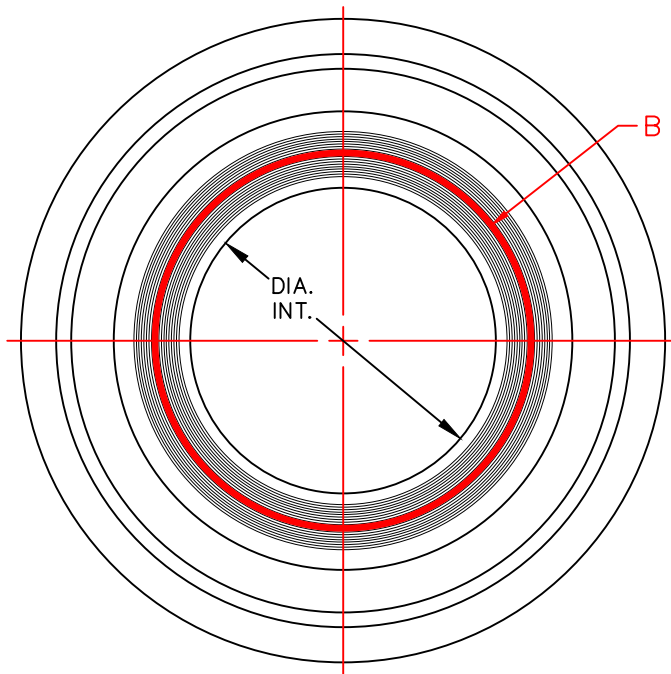


DRAWN BY:	A.B.	23/03/2017	PROJECT:
VERIFIED BY:			DESCRIPTION : AZUR CLASS 100 CAST-IN SEAL
PROPERTY & CONFIDENTIALITY THE INFORMATIONS PRESENT ON THIS DRAWING ARE THE SOLE PROPERTY OF AZUR RUBBER. ANY REPRODUCTION, COMPLETE OR PARTIAL OF THIS DRAWING WITHOUT THE WRITTEN APPROVAL OF AZUR RUBBER IS STRICTLY PROHIBITED.	UNSPECIFIED TOLERANCES METRIC DIMENSIONS ANGLES : ± f 0 : ± 1.00mm 0.0 : ± 0.50mm 0.00 : ± 0.250mm 0.000 : ± 0.125mm U.S.A. TYPE PROJECTIONS DO NOT MEASURE THE DRAWING	MATERIAL :	RUBBER CONFORM TO BNQ SPECIFICATIONS
		PART NUMBER :	



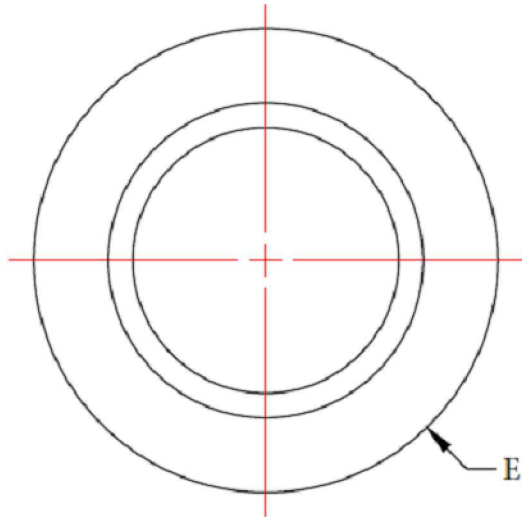
CONNECTOR DIMENSIONS

DESCRIPTION		B	DIA INT.	A
CA-100-4	CONNECTOR 100MM	100	70	18
CA-150-6	CONNECTOR 150MM	150	121	18
CA-200-8	CONNECTOR 200MM	200	171	18
CA-250-10	CONNECTOR 250MM	250	229	18
CA-300-12	CONNECTOR 300MM	300	279	18
CA-375-15	CONNECTOR 375MM	375	356	18
CA-445-17	CONNECTOR 445MM	445	406	18

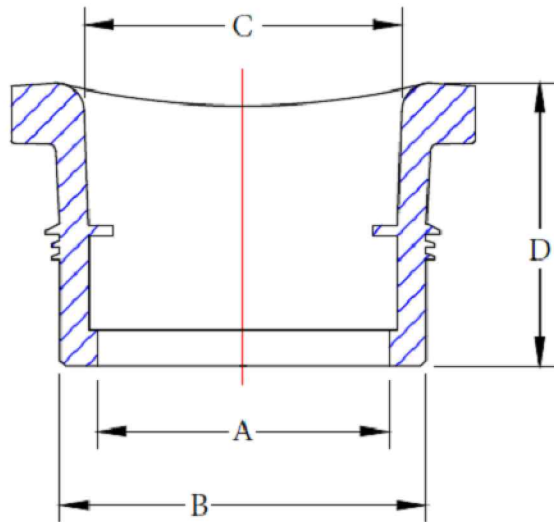


DRAWN BY: A.B.	23/03/2017	PROJECT:
VERIFIED BY:		DESCRIPTION : CONNECTOR
PROPERTY & CONFIDENTIALITY THE INFORMATIONS PRESENT ON THIS DRAWING ARE THE SOLE PROPERTY OF AZUR RUBBER. ANY REPRODUCTION, COMPLETE OR PARTIAL OF THIS DRAWING WITHOUT THE WRITTEN APPROVAL OF AZUR RUBBER IS STRICTLY PROHIBITED.	UNSPECIFIED TOLERANCES METRIC DIMENSIONS ANGLES : ± f 0 : ± 1.00mm 0.0 : ± 0.50mm 0.00 : ± 0.250mm 0.000 : ± 0.125mm U.S.A. TYPE PROJECTIONS DO NOT MEASURE THE DRAWING	MATERIAL : RUBBER CONFORM TO BNQ SPECIFICATIONS
		PART NUMBER :





AZUR SADDLE DIMENSIONS



DESCRIPTION		A	B	C	D	E
A	SELLETTE 4" AZUR	100	129	114	98	162
B	SELLETTE 5" AZUR	138	163	150	98	199
C	SELLETTE 6" AZUR	151	179	162	96	212
D	SELLETTE 8" AZUR	200	228	215	97	263
E	SELLETTE 10" AZUR	251	301	271	105	356

DRAWN BY: A.B. 23/03/2017

PROJECT:

VERIFIED BY:

DESCRIPTION : AZUR SADDLE

PROPERTY & CONFIDENTIALITY
THE INFORMATIONS PRESENT ON THIS DRAWING ARE THE SOLE PROPERTY OF AZUR RUBBER. ANY REPRODUCTION, COMPLETE OR PARTIAL OF THIS DRAWING WITHOUT THE WRITTEN APPROVAL OF AZUR RUBBER IS STRICTLY PROHIBITED.

UNSPECIFIED TOLERANCES
METRIC DIMENSIONS
ANGLES : ± f
0 : ± 1.00mm
0.0 : ± 0.50mm
0.00 : ± 0.250mm
0.000 : ± 0.125mm
U.S.A. TYPE PROJECTIONS DO NOT MEASURE THE DRAWING

MATERIAL : RUBBER CONFORM TO BNQ SPECIFICATIONS

PART NUMBER :

